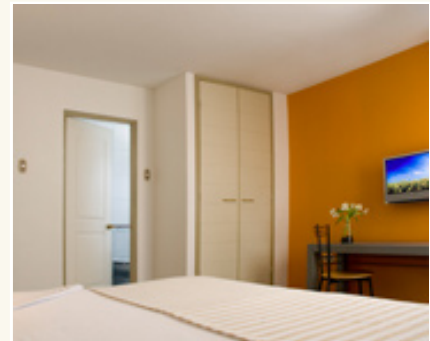


## STANDARD SINGLE ROOM:

It is an excellent room for one person with a **double bed** fulfilling its classic function for a **traveling businessman**.

## THIS ROOM IS EQUIPPED WITH:

- Central Heating
- Phone with DN and DC
- Security Box
- 23" LCD Television
- WIFI Internet Connection
- TV Cable



## CHECK OUT

Time is no later than 12:00 pm.

If you want to stay in the room until 18:00 pm, you must pay a one day half charge.